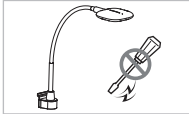


Caution



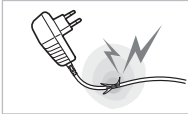
Do not repair, disassemble, or modify under any circumstances.



Do not place near any heat sources or in direct sunlight.



Use **ONLY** the supplied AC power adaptor.



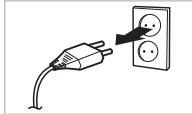
Do not use appliances with frayed or damaged electrical cords.



Do not touch electrical appliances with wet hands or when liquids are present.



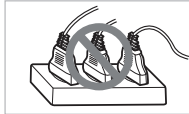
Please keep the light and all appliances dry and clean.



Unplug adaptor when the light will not be used for an extended time.



Clean only with a soft dry cloth and do not use solvents or cleaning solutions.



Never overload electrical circuits as it may cause electrical shock or fire.

Specification

MODEL	810-T45H(G)
Color Temp (K)	Study mode (6,000K~7,000K) Reading mode (4,500K~5,500K)
CRI	Over 75
Brightness	Approx. 1,000 / 800 / 600 Lux ±100 Lux
Timer	30 min, 60 min
Life Time	Longer than 40,000 Hours
Power	AC / DC adaptor : AC 100~240V, DC 12V \pm 1A
Power Consumption	7W
Dimension (mm)	126mm(W : Head) x 126mm(D : Head) x 535mm(L : Arm)
Weight	400g
Operating Temperature	-10 ~ 40 °C

Warranty Card

•Product: LED Toolbar Lamp

•Model : 810-T45H(G)

•Warranty Period : 1 year

•Purchase Date : . . .

Customer Info	Name	
	Telephone	
	Address	
Seller	Mutual	
	Telephone	

•For Repair or Service / A/S (+82-31-474-0852 ext. 128)

If the product stops working correctly, discontinue its use and contact to the service center where you purchased.

•Repair Policy

- This product has passed strict quality control and testing process.
- Failure of the product under normal operating conditions, during the warranty period may be repaired by Diasonic or our authorized service organization free of charge.
Some shipping or handling charges may be involved.
- For the following cases, some service fees will be charged.
 - When the product is damaged due to user's mishandling, abuse, or improper operation.
 - When the product is damaged due to user's modification, attempted repair, or otherwise access to sealed/non-user serviceable items.
 - When the product is damaged due to fires, pollution, earthquakes and any other natural or unnatural conditions, accidents, etc.
- This warranty card is only valid for service in Korea.

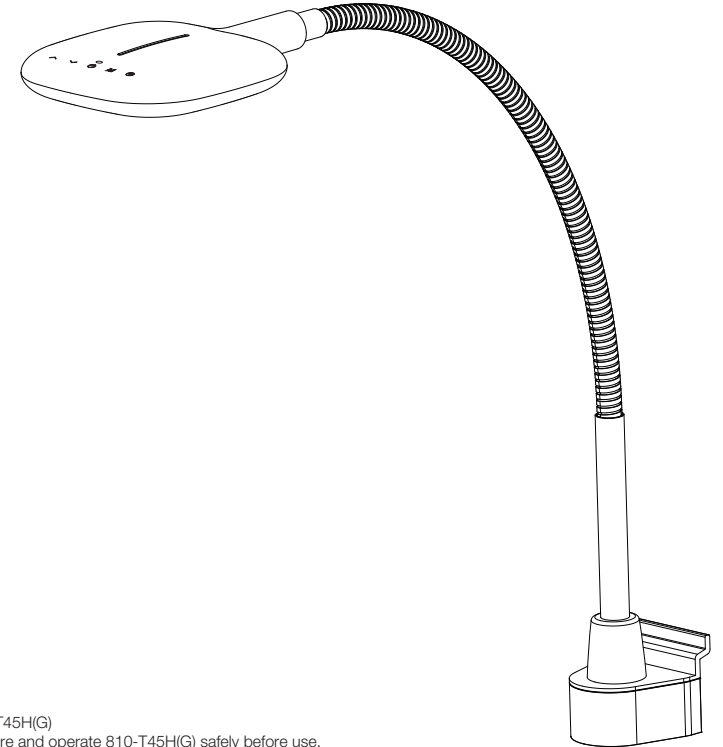
DIASONIC

Conceptum

LED TOOLBAR LAMP

810-T45H(G)

USER MANUAL



Thank you for purchasing 810-T45H(G)
Please read instructions with care and operate 810-T45H(G) safely before use.
We'd like to recommend you to keep instructions to use 810-T45H(G).

FCC (Federal Communications Commission)

- Caution : Any changes or modifications in construction of this device which are not expressly approved by the party responsible for compliance could void the user's authority to operate the equipment.
- Note : This equipment has been tested and found to comply with the limits for a Class B digital device, pursuant to part 15 of the FCC Rules. These limits are designed to provide reasonable protection against harmful interference in a residential installation. This equipment generates, uses and can radiate radio frequency energy and, if not installed and used in accordance with the instructions, may cause harmful interference to radio communications. However, there is no guarantee that interference will not occur in a particular installation. If this equipment does cause harmful interference to radio or television reception, which can be determined by turning the equipment off and on, the user is encouraged to try to correct the interference by one or more of the following measures:
 - Reorient or relocate the receiving antenna.
 - Increase the separation between the equipment and receiver.
 - Connect the equipment into an outlet on a circuit different from that to which the receiver is connected.
 - Consult the dealer or an experienced radio / TV technician for help.



Advantages of LED Toolbar Lamp



ECO-friendly light

It provides a safe, comfortable, consistent light that stimulates concentration without eye strain. It contains no mercury or environmentally harmful substances.



Low power consumption

It consumes 80% LESS power than a typical fluorescent light.



Extraordinary Long lifetime

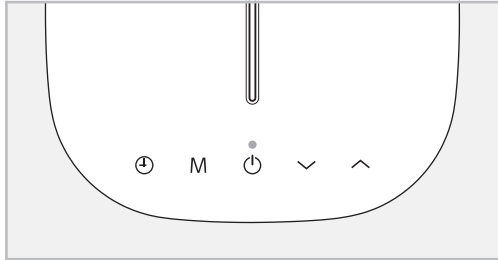
Lasting 40 TIMES LONGER than a typical incandescent bulb. (Used 5 hours per day it will last up to 22 years)



Flicker Free Light

Reduced eye strain without the flickering present in both incandescent and fluorescent lights.

Appearance and operation method



•One Touch Control ON/OFF (⏻)

Convenient to control functions of ON/OFF on various situations by simple touch method.

•Brightness Control (⏮ ⏭)

-3 Steps Brightness Control Function.

-Properly adjusted brightness protects eyesight.

•Operational Modes M

Reading Mode (4,500~5,500K)

It stimulates concentration and reduces eye strain with the choice of mid-range color temperature.

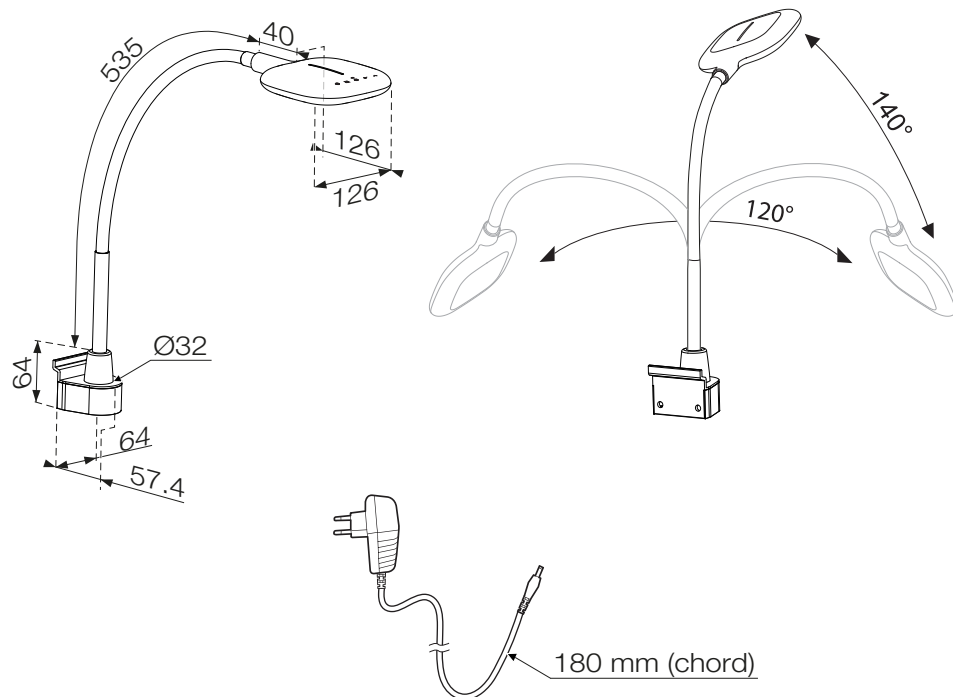
Study Mode (6,000~7,000K)

Increases attention and concentration with the choice of high-range color temperature.

•Timer Control (⌚)

Press timer icon once, LED will automatically be turned off after 60min. Press(⌚) one more after set up, timer will be canceled. When timer is in operation, power button will blink in red.

Adjustable Multi-directional Neck



Brightness of classified mode

Mode/Step	1 Step	2 Step	3 Step	[Measurement: 40cm away from luminous side]
Reading mode	600	800	1000	
Study mode	600	800	1000	

Unit: LUX ±100

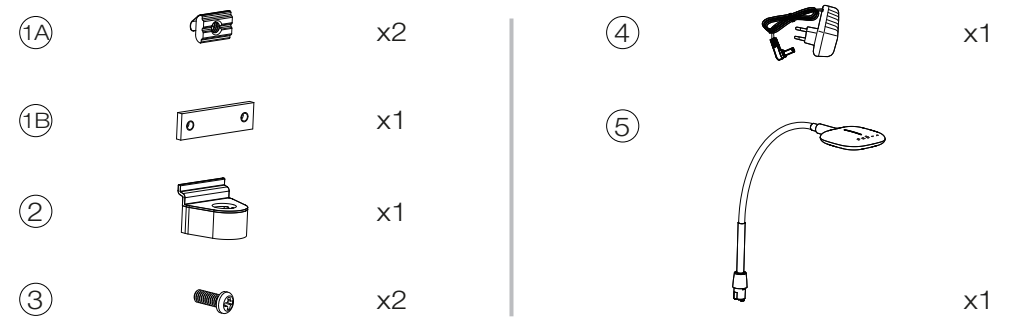
Natural Light

LED desk lamp's CRI is 75. It reproduces a natural type light source.

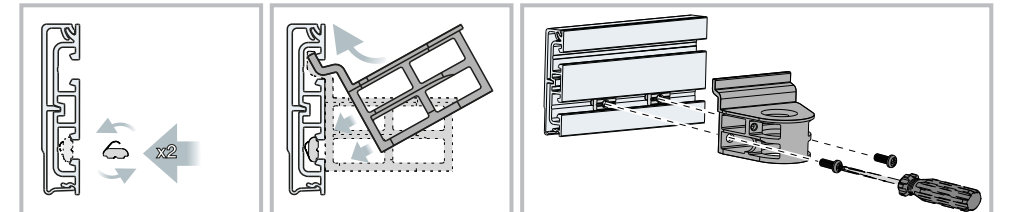
CRI=Color Rendering Index

Color Rendering Index (CRI) is the Index which shows how much the light source is close to natural sun light. The CRI of natural sun light is 100. The higher CRI index is, the closer to natural sun light.

Product Composition



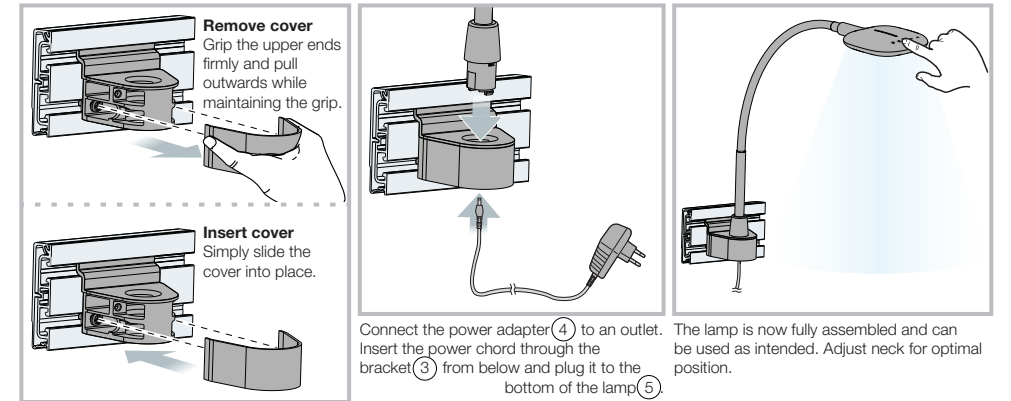
Assembly and Installation



Decide on nut variant (1A) or (2A). Push it into the aluminum profile track. The sliding nut (2A) has to be inserted from the side.

Remove the bracket's (2) cover (see instructions below). Once off, hook the bracket onto the upper track. Attempt to align screws to facilitate next step.

Fully align the screw holes from the nuts with the holes in the bracket. Use screws (3) to fixate the bracket to the aluminum profile.



Remove cover
Grip the upper ends firmly and pull outwards while maintaining the grip.

Insert cover
Simply slide the cover into place.

Connect the power adapter (4) to an outlet. Insert the power cord through the bracket (3) from below and plug it to the bottom of the lamp (5).

The lamp is now fully assembled and can be used as intended. Adjust neck for optimal position.